

TIIG  
INJURY SURVEILLANCE IN THE NORTH WEST OF ENGLAND

Royal Lancaster Infirmary Emergency Department

Monthly Bulletin: October 2012 to September 2013

This bulletin provides a breakdown of all injury attendances to Royal Lancaster Infirmary Emergency Department (ED) between October 2012 and September 2013.

During these twelve months, there were 15,068 injury attendances to the ED. The month with the highest attendance was July 2013 with 1,507 attendances compared to 929 in December 2012 (**Figure 1**).

There were more males than females presenting at the ED between October 2012 and September 2013 (males=8,210; 54%) (**Figure 1**).

**Figure 2** illustrates the age group of ED attendances for each month. The majority of attendees were aged 15-29 (n=4,409; 29%) and 30-59 years (n=4,406; 29%).

The source of referral to the ED is shown in **Table 1**. Almost three-quarters (74%) of attendances were self-referrals (n=11,220) and 15% were referred by the emergency services (n=2,331).

**Table 2** details the injury group of ED attendances. The majority (78%) of attendances were classified as other injury (n=11,766). Sports injury accounted for 12% of attendances (n=1,743) and 7% were due to road traffic collisions (RTCs) (n=1,069). Two per cent of attendances were assault-related (n=351) and 1% were injuries caused by deliberate self-harm (DSH) (n=139).

The incident location for attendances to Royal Lancaster Infirmary ED is displayed in **Table 3**. Thirty-five per cent of incidents occurred in a public place (n=5,339), followed by a third (33%) in the home (n=5,030).

**Table 4** illustrates the discharge destination for injury attendances. Half (50%) of attendees were discharged with no follow-up treatment required and nearly one-fifth (18%) were referred to the fracture clinic (n=2,651). Thirteen per cent were discharged with follow-up treatment to be provided by the patient's General Practitioner (n=1,942) and one in ten (10%) were admitted into hospital (n=1,449).

#### **Assault attendances**

Between October 2012 and September 2013 there were 351 assault-related injury attendances to Royal Lancaster Infirmary ED. The month with the highest attendance was June 2013 with 37 attendances, compared to 18 in February 2013 (**Figure 3**).

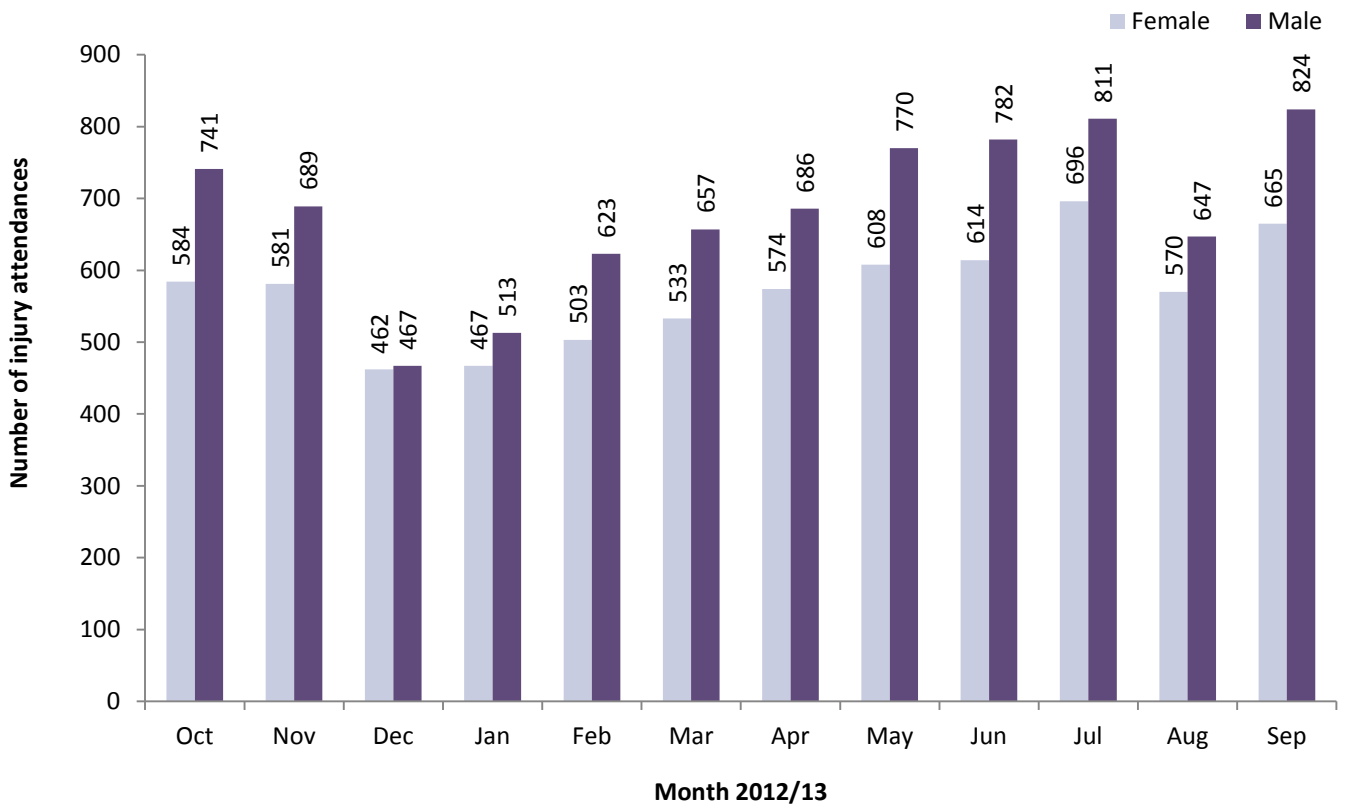
The majority (71%) of assault attendees presenting at the ED were male (males=248) (**Figure 3**).

**Table 5** details the age group of assault attendances for each month. Over half (55%) were aged 15-29 years (n=193) and just over a third (34%) were aged 30-59 (n=118).

**Table 6** shows the incident location for assault injury attendances. The primary incident location was in a public place (n=156; 44%), followed by 29% recorded as other location (n=102) and 18% which occurred in the home (n=64).

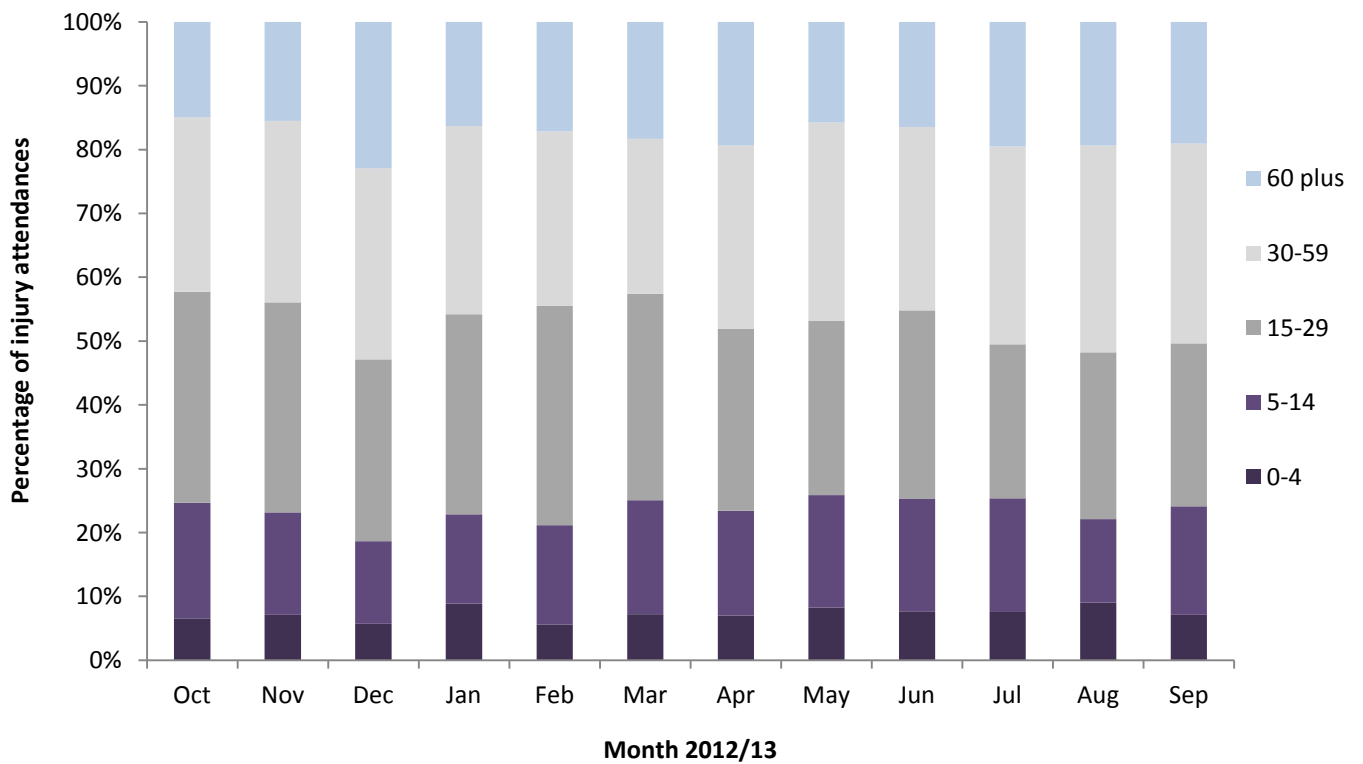
The discharge destination for assault attendees are illustrated in **Table 7**. Almost half (47%) were discharged (n=165) with almost three in ten (29%) requiring follow-up treatment (n=102). Ten per cent of assault attendees were admitted into hospital (n=35).

**Figure 1: ED injury attendances by gender and month, October 2012 to September 2013\***



\* There was one attendance where the gender was unknown.

**Figure 2: Age group of ED injury attendances by month, October 2012 to September 2013**



**Table 1: ED injury attendances by source of referral and month, October 2012 to September 2013<sup>1,2</sup>**

Source of referral	Oct	Nov	Dec	Jan	Feb	Mar	Apr	May	Jun	Jul	Aug	Sep	Total	%
Self-referral	751	1006	703	811	908	975	977	1014	1063	1103	848	1061	11220	74
Emergency services	144	191	192	144	155	169	176	200	186	249	243	282	2331	15
Other	351	60	25	19	45	38	87	130	113	97	98	97	1160	8
Educational establishment	29	***	0	0	5	***	5	8	9	20	0	21	99	1
GP	10	9	5	***	7	0	7	7	<10	10	8	10	83	1
Work	32	***	***	0	***	0	***	5	***	11	8	12	76	1
Police	8	***	***	***	0	***	***	8	6	7	5	<10	52	0
Health care provider	0	0	***	***	<10	***	***	7	7	10	7	***	47	0
<b>Total</b>	<b>1325</b>	<b>1270</b>	<b>929</b>	<b>980</b>	<b>1126</b>	<b>1190</b>	<b>1260</b>	<b>1379</b>	<b>1396</b>	<b>1507</b>	<b>1217</b>	<b>1489</b>	<b>15068</b>	<b>100</b>

**Table 2: ED injury attendances by injury group and month, October 2012 to September 2013\*<sup>1</sup>**

Injury group	Oct	Nov	Dec	Jan	Feb	Mar	Apr	May	Jun	Jul	Aug	Sep	Total	%
Other injury	973	952	739	749	827	884	989	1113	1113	1258	1028	1141	11766	78
Sports injury	222	166	85	114	188	200	159	122	139	96	77	175	1743	12
RTC	81	101	67	89	89	68	77	100	97	111	76	113	1069	7
Assault	33	35	30	<25	<20	29	26	32	37	29	25	34	351	2
DSH	16	16	8	<10	***	9	9	12	10	13	11	26	139	1
<b>Total</b>	<b>1325</b>	<b>1270</b>	<b>929</b>	<b>980</b>	<b>1126</b>	<b>1190</b>	<b>1260</b>	<b>1379</b>	<b>1396</b>	<b>1507</b>	<b>1217</b>	<b>1489</b>	<b>15068</b>	<b>100</b>

\* Due to low numbers, firework injuries have been included in the 'other injury' category (n=1).

**Table 3: ED injury attendances by incident location and month, October 2012 to September 2013\*\*<sup>1</sup>**

Location	Oct	Nov	Dec	Jan	Feb	Mar	Apr	May	Jun	Jul	Aug	Sep	Total	%
Public place	436	403	344	335	395	338	456	511	543	531	471	576	5339	35
Home	382	413	339	345	332	407	439	457	454	514	419	529	5030	33
Other	298	238	128	155	217	250	221	258	214	285	224	163	2651	18
Workplace	104	102	65	67	88	87	94	85	120	<105	<105	121	1134	8
Educational establishment	104	114	53	78	94	108	50	68	65	<80	***	100	913	6
<b>Total</b>	<b>1325</b>	<b>1270</b>	<b>929</b>	<b>980</b>	<b>1126</b>	<b>1190</b>	<b>1260</b>	<b>1379</b>	<b>1396</b>	<b>1507</b>	<b>1217</b>	<b>1489</b>	<b>15068</b>	<b>100</b>

\*\* There was one attendance where location was unknown; this has been included in the total.

**Table 4: ED injury attendances by discharge destination and month, October 2012 to September 2013<sup>1,3</sup>**

Discharge destination	Oct	Nov	Dec	Jan	Feb	Mar	Apr	May	Jun	Jul	Aug	Sep	Total	%
Discharged - no follow-up	746	627	472	550	542	664	628	753	695	705	565	596	7543	50
Fracture clinic	202	227	137	165	228	196	253	232	269	271	178	293	2651	18
Discharged – follow-up care by GP	155	151	124	92	154	126	151	150	166	210	207	256	1942	13
Admitted	108	124	101	81	109	85	105	123	125	149	143	196	1449	10
Out-patient clinic	29	28	26	29	27	44	26	32	44	45	30	45	405	3
Left - before being treated	24	40	24	14	22	27	29	29	29	41	33	21	333	2
ED clinic	19	18	15	20	16	15	33	26	42	37	29	37	307	2
Other health care professional	29	19	17	14	17	15	16	14	10	22	9	18	200	1
Transferred to other HCP	***	<10	5	8	<15	9	10	16	13	19	14	22	138	1
Left - refused treatment	***	8	<10	***	0	<10	***	***	***	<10	<10	***	51	0
Other	***	16	***	***	***	***	***	***	***	***	***	***	40	0
Unknown	0	***	0	***	0	***	0	0	0	0	0	0	7	0
Died in department	0	0	0	0	0	0	***	0	0	0	0	0	***	0
Restored to ward	0	0	0	0	0	0	***	0	0	0	0	0	***	0
<b>Total</b>	<b>1325</b>	<b>1270</b>	<b>929</b>	<b>980</b>	<b>1126</b>	<b>1190</b>	<b>1260</b>	<b>1379</b>	<b>1396</b>	<b>1507</b>	<b>1217</b>	<b>1489</b>	<b>15068</b>	<b>100</b>

<sup>1</sup> Please note that all numbers less than five have been suppressed (with \*\*\*) in line with patient confidentiality and if there is only one number less than five in a category then two numbers will be suppressed to prevent back calculations from totals.

<sup>2</sup> GP = General Practitioner.

<sup>3</sup> HCP = Health Care Provider

## Assaults

Figure 3: Number of ED assault attendances by gender and month, October 2012 to September 2013<sup>4</sup>

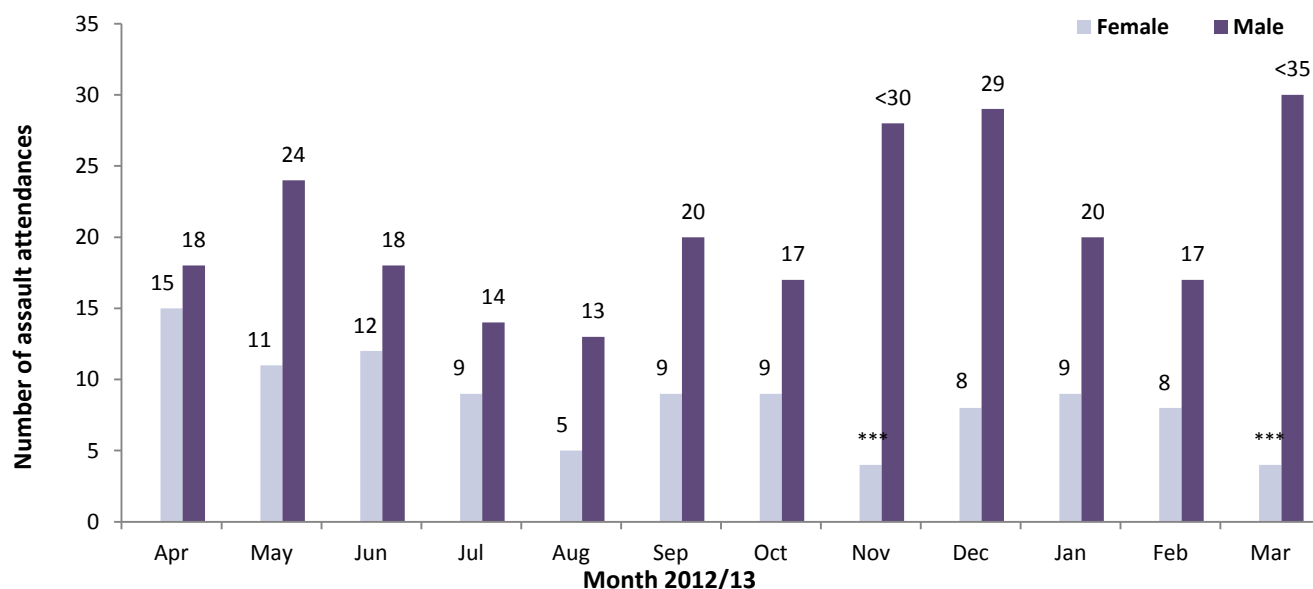


Table 5: ED assault attendances by age group and month, October 2012 to September 2013<sup>4</sup>

Age group	Oct	Nov	Dec	Jan	Feb	Mar	Apr	May	Jun	Jul	Aug	Sep	Total	%
5-14	<10	***	***	***	***	***	***	***	***	***	***	***	28	8
15-29	15	18	19	10	7	18	16	21	24	15	14	16	193	55
30-59	11	13	9	11	6	6	7	8	11	12	9	15	118	34
60 plus	***	***	***	***	***	***	***	***	***	***	***	***	11	3
<b>Total</b>	<b>33</b>	<b>35</b>	<b>30</b>	<b>23</b>	<b>18</b>	<b>29</b>	<b>26</b>	<b>32</b>	<b>37</b>	<b>29</b>	<b>25</b>	<b>34</b>	<b>351</b>	<b>100</b>

<sup>^</sup> There was one attendance in the 0-4 age group; this has been included in the total.

Table 6: ED assault attendances by incident location and month, October 2012 to September 2013<sup>4</sup>

Location	Oct	Nov	Dec	Jan	Feb	Mar	Apr	May	Jun	Jul	Aug	Sep	Total	%
Public place	14	21	18	6	5	12	11	15	20	7	7	20	156	44
Other	11	6	6	7	8	8	7	10	6	14	11	8	102	29
Home	<10	<10	***	<10	***	***	<10	<10	<10	***	<10	<10	64	18
Workplace	***	***	***	0	***	***	***	0	***	***	***	0	20	6
Educational establishment	0	0	0	***	***	***	0	***	0	***	0	***	9	3
<b>Total</b>	<b>33</b>	<b>35</b>	<b>30</b>	<b>23</b>	<b>18</b>	<b>29</b>	<b>26</b>	<b>32</b>	<b>37</b>	<b>29</b>	<b>25</b>	<b>34</b>	<b>351</b>	<b>100</b>

Table 7: ED assault attendances by discharge destination and month, October 2012 to September 2013<sup>4</sup>

Discharge destination	Oct	Nov	Dec	Jan	Feb	Mar	Apr	May	Jun	Jul	Aug	Sep	Total	%
Discharged	21	11	15	11	9	17	14	18	16	11	10	12	165	47
Follow-up	5	13	9	6	5	5	<10	7	8	<15	8	13	102	29
Other	<10	<10	***	***	***	***	***	***	5	***	<10	***	45	13
Admitted	***	***	***	***	***	***	0	***	7	0	***	<10	35	10
<b>Total</b>	<b>33</b>	<b>35</b>	<b>30</b>	<b>23</b>	<b>18</b>	<b>29</b>	<b>26</b>	<b>32</b>	<b>37</b>	<b>29</b>	<b>25</b>	<b>34</b>	<b>351</b>	<b>100</b>

<sup>5</sup> There were four attendances where the discharge destination was unknown; these have been included in the total.

Published October 2013

Karen A Critchley (née Swarbrick) – TIIG Researcher/Analyst

Centre for Public Health, Faculty of Education, Health and Community, Liverpool John Moores University,  
2nd Floor, Henry Cotton Building, Liverpool L3 2ET

T: 0151 231 4498 | E: [K.A.Swarbrick@ljmu.ac.uk](mailto:K.A.Swarbrick@ljmu.ac.uk) | W: [www.tiig.info](http://www.tiig.info) and [www.cph.org.uk](http://www.cph.org.uk)

(Please note data requests should be made through the TIIG website)

<sup>4</sup> Please note that all numbers less than five have been suppressed (with \*\*\*) in line with patient confidentiality and if there is only one number less than five in a category then two numbers will be suppressed to prevent back calculations from totals.